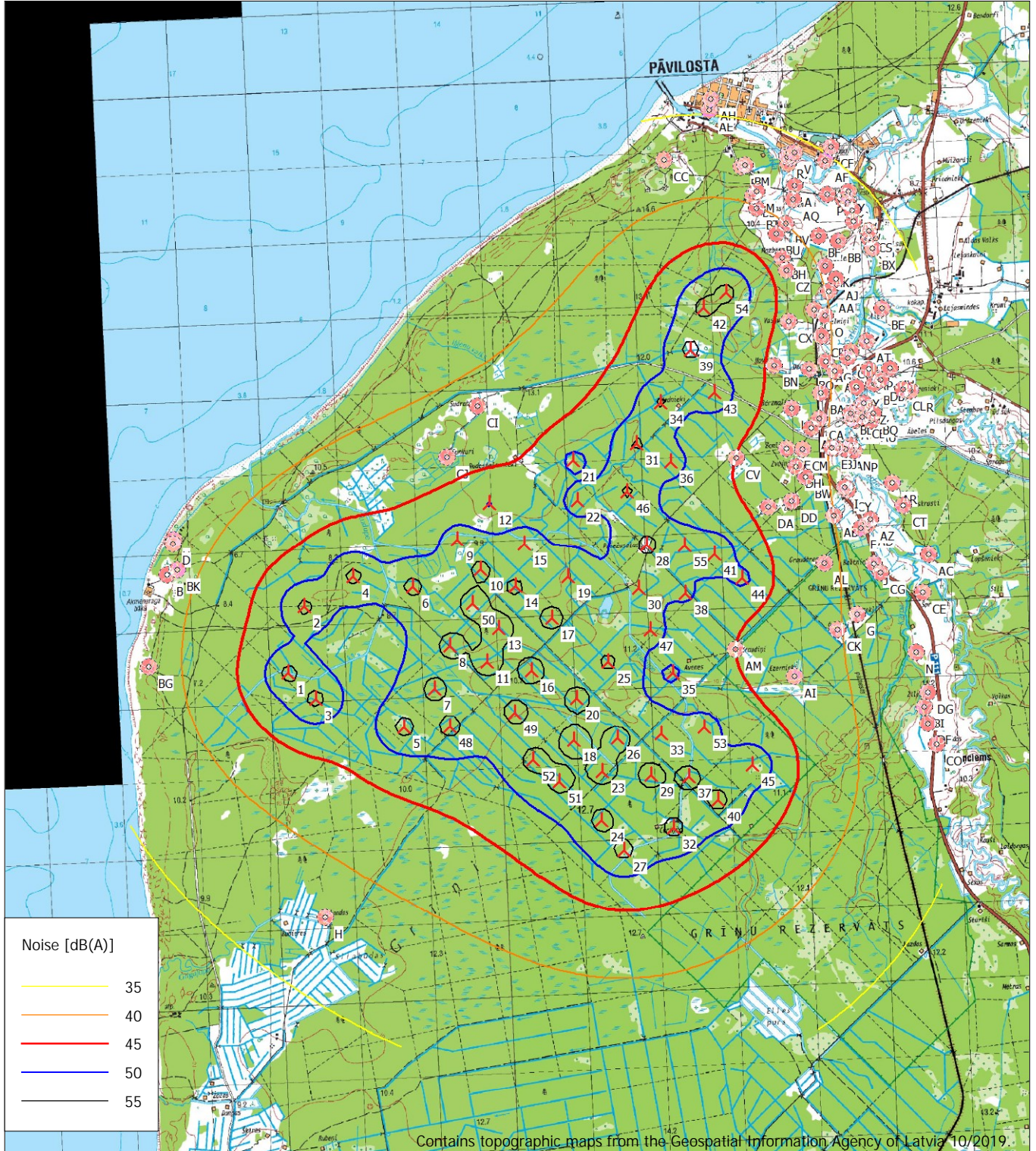


DECIBEL - Map Höchster Schallwert

Calculation: All-houses_N163-7000-HH164m-STE



Map: Latvian Topographic Map, Print scale 1:75 000, Map center Latvian TM LKS92-LKS92 (LV) East: 325 268 North: 302 511
 ▲ New WTG
 ■ Noise sensitive area
 Noise calculation model: ISO 9613-2 German (Interimsverfahren). Wind speed: Highest noise value
 Height above sea level from active line object